
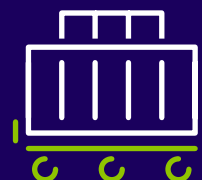


# Nippon Express Europe

Brochure 2023\_V1



 49 Countries  
312 Cities  
739 Locations



[neeu-info@nipponexpress.com](mailto:neeu-info@nipponexpress.com)



In January 2022, with a new corporate symbol, we at NX Group have set to work to respond better than ever to customer expectations.

**The promise of NX Group**  
When most people think “transport”,  
NX Group thinks “possibilities”.

Transport is more than simply carrying things from one place to another. We believe in a greater understanding of what those “things” might mean, the evolution of that meaning, and the advancement of both our customers’ business and society in general. We combine technologies and techniques to provide fine-tuned business solutions customized to individual customer need.

Dedicating our expertise and creativity to the success of our customers, we serve the wider interests of society overall.

**The NX Group**  
**Corporate Philosophy**

**Our Mission**  
Be a Driving Force for Social  
Development

**Our Challenge**  
Create New Ideas and Value  
that Expand the Field of  
Logistics

**Our Pride**  
Inspire Trust Every Step of  
the Way

**The NX Group**  
**Purpose**

Breaking new trails,  
finding new ways,  
developing new connections.

Through the success our cus-  
tomers enjoy with us, we con-  
tribute vitality to provide a rich,  
fruitful, and sustainable tomor-  
row for all.

Since its founding, the NX Group has employed its logis-  
tical strengths to connect people, businesses and regions  
throughout the world. In so doing, we have continuously  
supported social development.

While our mission never changes, we continuously ad-  
vance to meet the world’s changing needs.

Making no compromise in safety and maintaining a deep  
focus on environmental issues, we continuously strive to  
deliver innovative solutions at the next frontier of logistics.

We will forever take pride in our ability to inspire trust and  
answer the call of society.

Every move we make is aimed at advancing society and  
bringing an enriched life to future generations.

**Nippon Express Europe Brochure 2023**  
**Table of Contents**

Company Overview	Page 4-5
Services	Page 6-7
• Air Freight	Page 8-9
• Ocean Freight	Page 10-11
• Rail Transportation	Page 12-13
• Logistics Solutions	Page 14-15
• Road Transportation	Page 16-17
Corporate Social Responsibility	Page 18-19
Applications & Systems	Page 20-21
Industries	Page 22-23
• Mobility & Industrial	Page 24-25
• Semiconductor	Page 26-27
• Pharmaceuticals	Page 28-29
• Electronics	Page 30-31
• Lifestyle	Page 32-33
• Industrial Projects	Page 34-35
Why Nippon Express	Page 36-37
Contact Details	Page 38

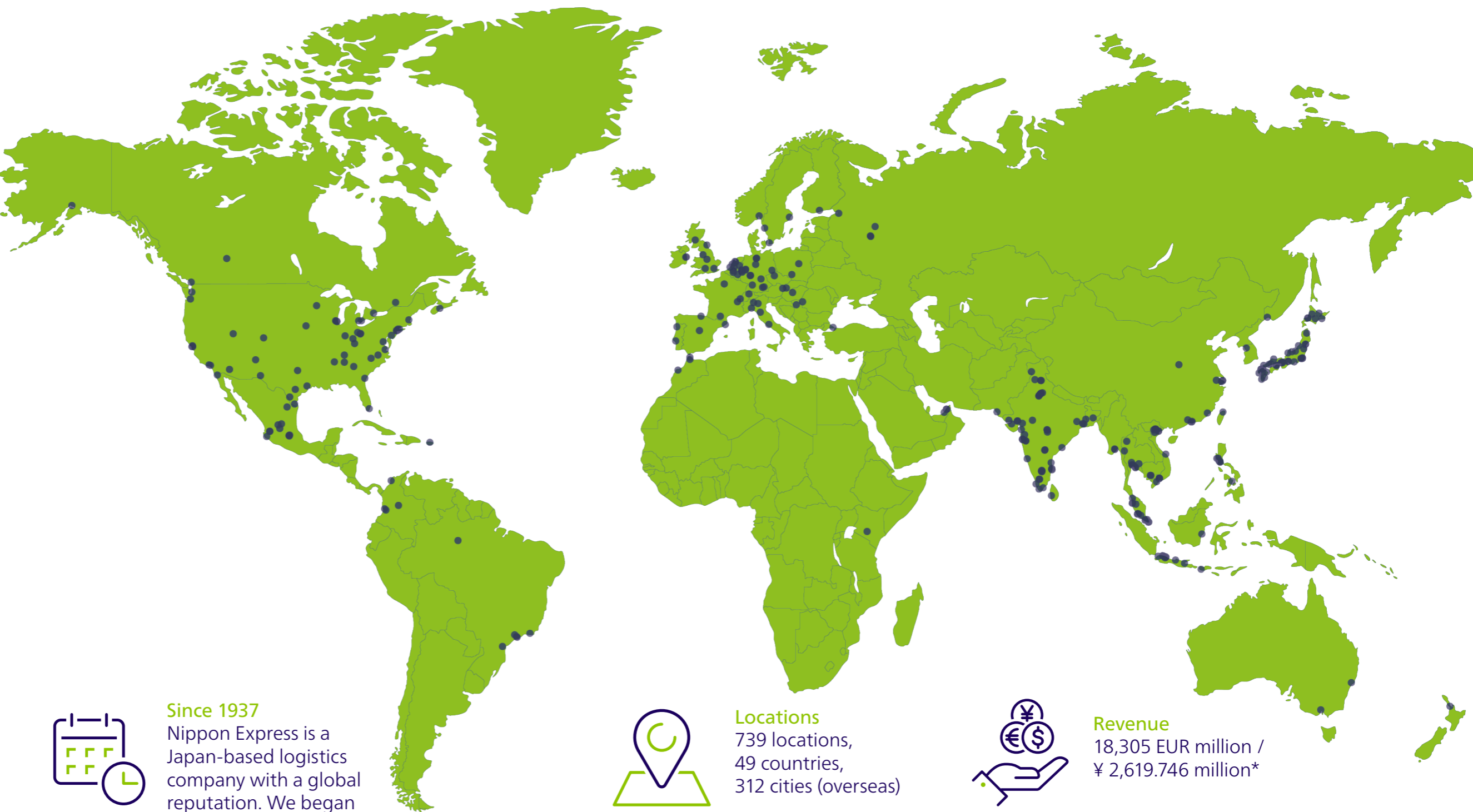
# COMPANY OVERVIEW

## Nippon Express Group Corporate Message

**We**  
Our unified strength makes us unique, driving everything we do on the front line and in the background to deliver unparalleled logistics services. The word “we” speaks to a complex system of individuals with specialized skills that work together to become an unstoppable force.

**Find**  
Every client, project, and task is different, and sometimes we have to innovate to achieve our goals. Our work demands exploration and thinking outside the box. It’s how we find the best way. The verb “find” in its present form tells a story of a company willing to dig deeper for the best results.

**the Way**  
Sure, there are many solutions, but there’s only one best way. We don’t find a way or some way; we find the best way, and we do it with passion and perseverance. Our efforts build connections to and between individuals and businesses.





**Since 1937**  
Nippon Express is a Japan-based logistics company with a global reputation. We began working as a logistics provider more than 80 years ago, and our ground transportation business dates back to 1872.



**Locations**  
739 locations,  
49 countries,  
312 cities (overseas)



**Employees**  
74.139 employees



**Revenue**  
18,305 EUR million /  
¥ 2,619.746 million\*



**Warehouse space**  
6,97 million m<sup>2</sup> warehouse space

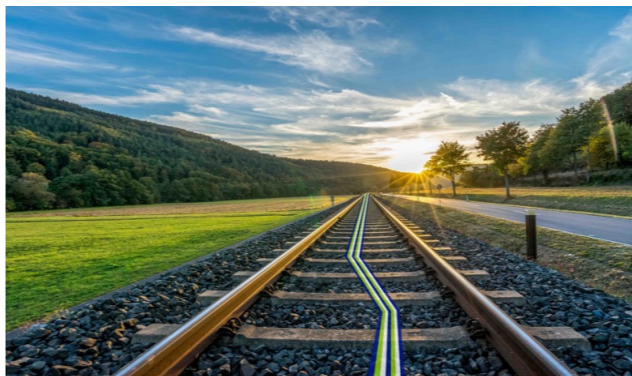
\* End of the fiscal year has been changed from March 31 to December 31 as of FY2021. As such, consolidated results for FY2021 reflect values for the nine-month period from April 1, 2021 to December 31, 2021



**Air Freight**  
Efficient and reliable air freight services backed by secure warehousing space and top quality operations within a global network.



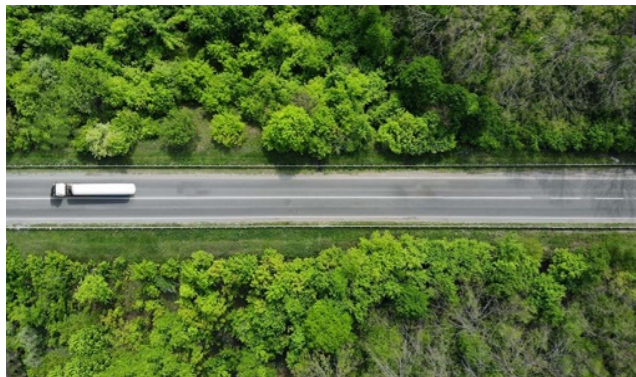
**Ocean Freight**  
By leveraging customised logistics and excellent care, our ocean freight services ensure prompt worldwide delivery at a cost-competitive price.



**Rail Transportation**  
With multiple partnerships forged globally, our railway freight offers flexible and effectively manageable services at lower costs with shorter lead times.



**Logistics Solutions**  
Our logistics expertise, coupled with our value-added services and leverage on cutting-edge technology enables us to meet a diverse range of strategic needs.



**Road Transportation**  
Road transportation that consists of well-optimised international ground transportation routes, supported by swift, safe, punctual and cost-effective services.



**Industrial Projects**  
Comprehensive solutions for the global transportation and installation of large equipments. We provide end-to-end services, including transport handling, assembly, and construction.



**Corporate Social Responsibility**  
The Nippon Express Group contributes to carbon-neutral societies and the preservation of the global environment through businesses that reduce the environmental impact of the group and our customers.



**Application & Systems**  
Diverse range of effective applications and systems in place that enable us to verify a multitude of information including delivery and shipping details in order to respond to client expectations.

## Key Benefits

### State-of-the-Art Facilities & High-Quality Operations

- We provide secure, reliable and consistent airfreight services through high-quality operations and capacity procured from our selected airline partner.
- All shipping and delivery aspects are optimised to meet our customer’s business needs.
  - These include high-security facilities and diverse transportation modes in compliance with logistics and customs procedures.

### A Comprehensive Global Network Covering All Operations

- We integrate high-quality operations and detailed lead-time management with our global network of more than 1,000 routes and cutting-edge logistics facilities worldwide.
- Our ability to present tailor-made support for our customers’ global business affairs is made possible through our in-depth knowledge of the import and export systems, as well as our familiarity of customs practices at all shipping and delivery sites.

### Diverse Range of Transportation Services & Solutions Catering to Customer Needs

- Our commitment to cater to your business needs is made possible with a wide range of solutions. Some examples of the services we provide include:
  - Temperature-controlled transportation for pharmaceuticals, chemicals and other commodities that require stringent quality control.
  - Vibration-proofed services that alleviate the effects of shocks and vibrations during transport.



Consistent  
Door-to-Door  
Operations



Freight Tracking  
Services



Intermodal  
Transportation



Covering the  
World



Deferred  
Consolidated  
Express  
AOG / NFO  
Charter



TAPA CLASS A



AS9120



AEO



C-TPAT



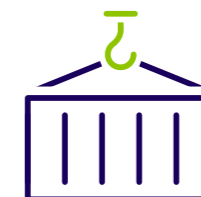
ISO 9001



ISO 14001



Carrier Flexibility



FCL & LCL



Multi-Model-Connection  
Rail/Road/Barge



Buyers  
Consolidation



Track & Trace



Quality KPI  
Record

## Key Benefits

### Cost Competitive and Effective

As one of Top 5 Global Logistics Providers, Nippon Express can offer market competitive rates and act as NVOCC for our valued customers.

### An integrated IT system which allows shipment monitoring and tracking

Our in-house integrated IT system enables us to track and monitor your cargo anywhere in the world, providing you comprehensive visibility into your goods and shipments.

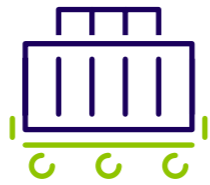
### Global Network

Tailor-made logistics service can be arranged for all valued customers with our extensive global network and local partnership agreements.

## Our Ocean Services

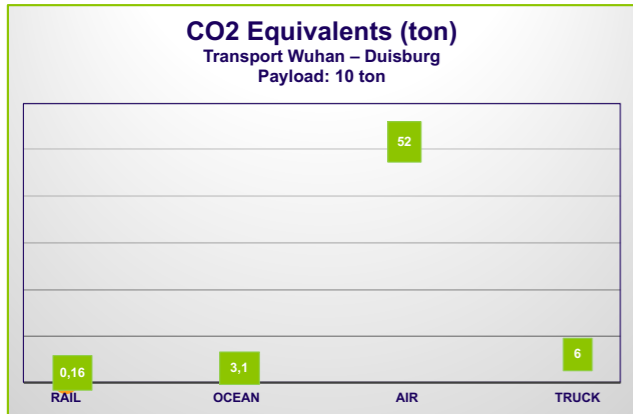
- Supply chain consultants for LCL & FCL management
- Control Tower set up for Named accounts
- Buyer's consolidation concepts
- Global Framework agreements with carriers
- Multimodal solutions
- Shorts Sea solutions
- Customs brokerage
- Maritime cargo insurance
- Temperature controlled business
- Industrial projects
- International Removal and Relocation service

# RAIL TRANSPORTATION



## CO2 / Environment

Comparison of CO2 emissions between different modes of transport



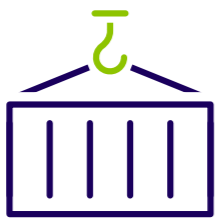
### Conditions of Comparison

- Transport from Wuhan to Duisburg by each mode
- Payload: 10 ton
- Commodity: General cargo
- Based on TTW (Tank-to-Wheel)
- Calculation by EcotransIT
- <https://www.ecotransit.org/en/>

## Our Railway Freight Service includes



Rail transport between Europe and Asia (Central Asian Countries, Mongolia and Turkey)



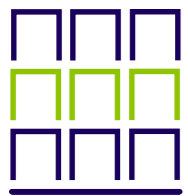
FCL & LCL



North and South routings



Rail Multi-Modal Connection to Japan, South Korea and South Asia



Block Train and Block Space



Track and Trace



Quality KPI Record



Own Network in Asia and Europe

## Basic routing - North & South Routing Example

- China Land Bridge (CLB)
- Middle Corridor
- Rail transport to Central Asian countries  
Kazakhstan, Uzbekistan, Turkmenistan, Tajikistan, Kyrgyzstan, Mongolia
- Rail transport between Europe and Turkey
- European Rail Transport



## Advantages of Railway Freight

**Less expensive than Air Freight and faster than Ocean Freight**  
Rail has a cost and time advantage compared to other modes of transport.

**High Levels of Security**  
Rail is a secure mode of transport regarding cargo damages and thefts.

**Environmentally-Friendly**  
Rail transportation has a lower CO2 emission than other traditional modes of transportation.



## Strategic Logistics

### Global Logistics

We offer a one stop solution from procurement to final sale, acting as your partner with flexibility tailor made to your requirements.

### 3PL

We provide high-grade 3PL services as an integrated logistics company with bespoke solutions to enable you to get your products to market efficiently and on time via our partner network of Last Mile specialists or by working with your selected forwarder.

### Tailor-Made and Value-Added Services

We provide value-added services for a wide range of distribution processes, including inspections, packing and tailor-made services. Our robust Global Warehousing Platform enables us to manage your business in real time and provides the data necessary to manage your inventory and end user expectations.

## Our Warehouse & Distribution services include

### Global Logistics

We offer a one stop solution from procurement to final sale, acting as your partner with flexibility tailor made to your requirements.

### Warehousing:

- Inbound
- Cross Dock
- Storage
- Hub
- Outbound
- PO / SO Management
- Inventory Management, Visibility, Tracing and Planning
- Labeling and Sorting
- Inventory Control by original WMS
- Testing / Quality Control
- Kitting
- Non-Resident Stock
- Vendor Managed Inventory (VMI)
- JIT Deliveries
- 3PL & Control Tower

### VAS:

- Pre-Delivery Instalment Service (PDI)
- Electro-Static Discharge Operation (ESD)
- Sampling
- Returns management
- Reconditioning, ironing, steaming, stain removal (apparel e-commerce)
- Label application
- Packaging
- Personalisation (e-commerce)

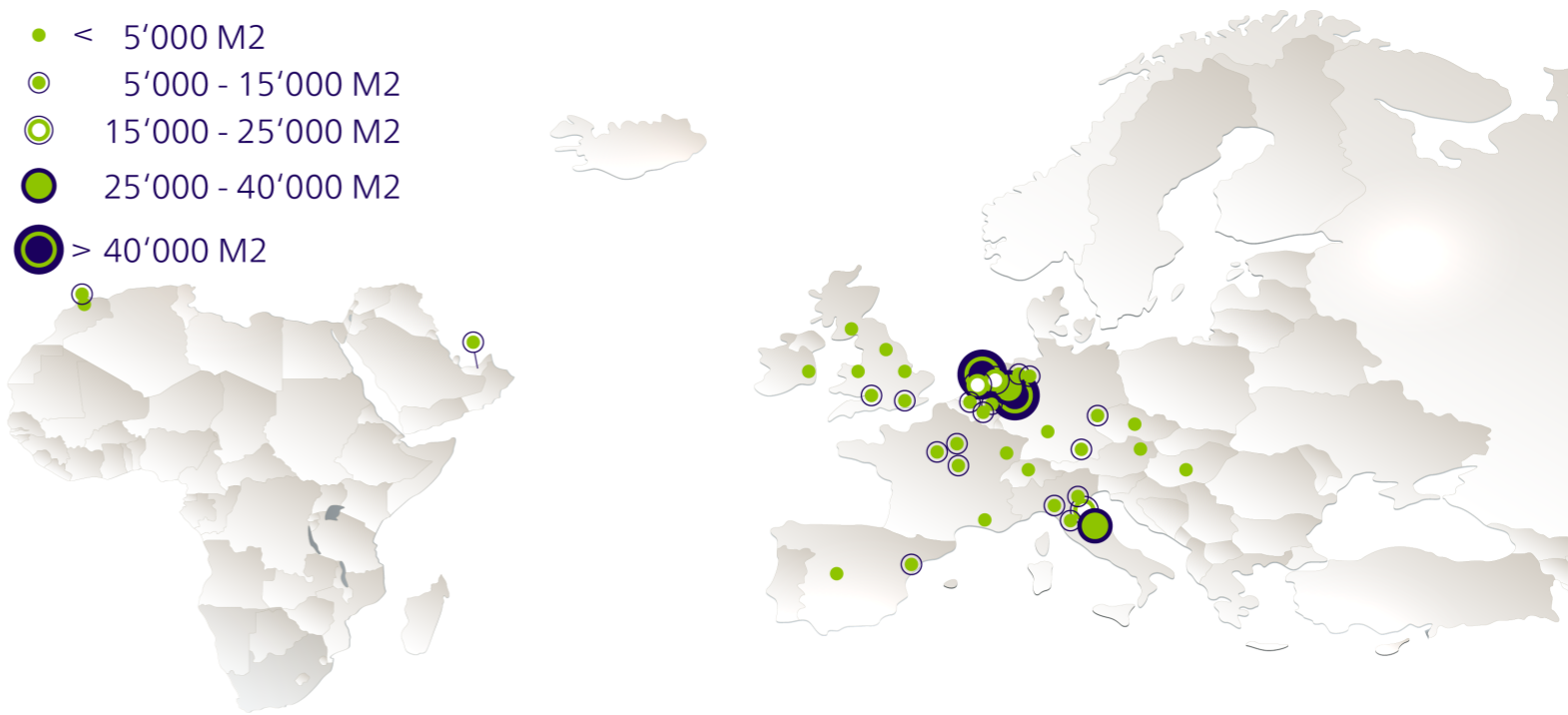
### Distribution:

- NX managed First Mile & Middle Mile
- Reliable Partner networks in Last Mile (line haul and courier services)
- Options to manage Last Mile solutions under clients' contract.
- Late cut off times for next day delivery (spare parts and e-commerce).

## Nippon Express EMEA

### Contract Logistics Warehouse Footprint

- < 5'000 M2
- 5'000 - 15'000 M2
- 15'000 - 25'000 M2
- 25'000 - 40'000 M2
- > 40'000 M2



# ROAD TRANSPORTATION



## Road Transportation & Distribution

### Network Services Covering the Entire Globe

We have established a service network covering all types of freight in accordance with conditions prevalent in each nation. Nippon Express is also able to create optimal transportation solutions that take lead time and cost into account by linking final mile distribution to our ocean freight, air freight, rail freight and warehouse solutions that we provide.

### High-Quality Transportation

Nippon Express has been providing transportation services since 1937 in Japan and since 1958 in other nations. We can therefore guarantee customers high-quality transportation services based on the experience and know-how that we have built up. Nippon Express utilizes its freight tracking system, which pin-points the location and status of your shipment.

### Vehicles and Cargo Handling

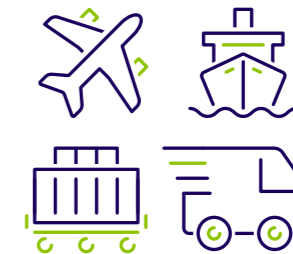
We have a full line-up of own vehicles in combination with dedicated and certified subcontractors. With this network, we can provide transportation services that match up with the type of freight being shipped, such as refrigerated cargo, valuables or white glove deliveries.



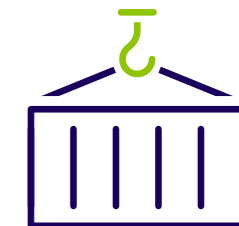
Ground Transportation



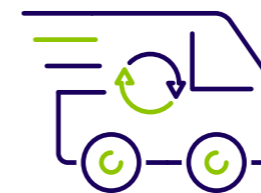
Cross Border



Intermodal movement



LTL & FTL



Milk run



T.M.S. incl. GPS



White Glove Deliveries



## An introduction to our CSR initiatives

### Nippon Express Group Environmental Charter

In April 2012, Nippon Express revised its Environmental Charter, first established in May 2001. With the revised Nippon Express Group Environmental Charter, which applies to all group companies, we undertake initiatives through group businesses to promote environmental responsibility.

### Corporate Social Responsibility Report

Our CSR Report aims to communicate to stakeholders in an easy-to-understand manner the Nippon Express Group's philosophy and initiatives related to Corporate Social Responsibility (CSR).

### Social Initiatives

Environmental Conservation, Environmental Education, Community Action Programs and Support for UNICEF.

### Commitment to Environment

Modal Shift, Initiatives to Introduce Low-pollution Vehicles and Enhance Fuel Economy, Initiatives for Promoting Resource and Energy Conservation, Transport System Improvements, Obtaining Environmental Certifications and Reducing Waste and Advancing the 3Rs.

More info: <http://www.nipponexpress.com/about/policy/>



## Nippon Express Group Charter of Conduct

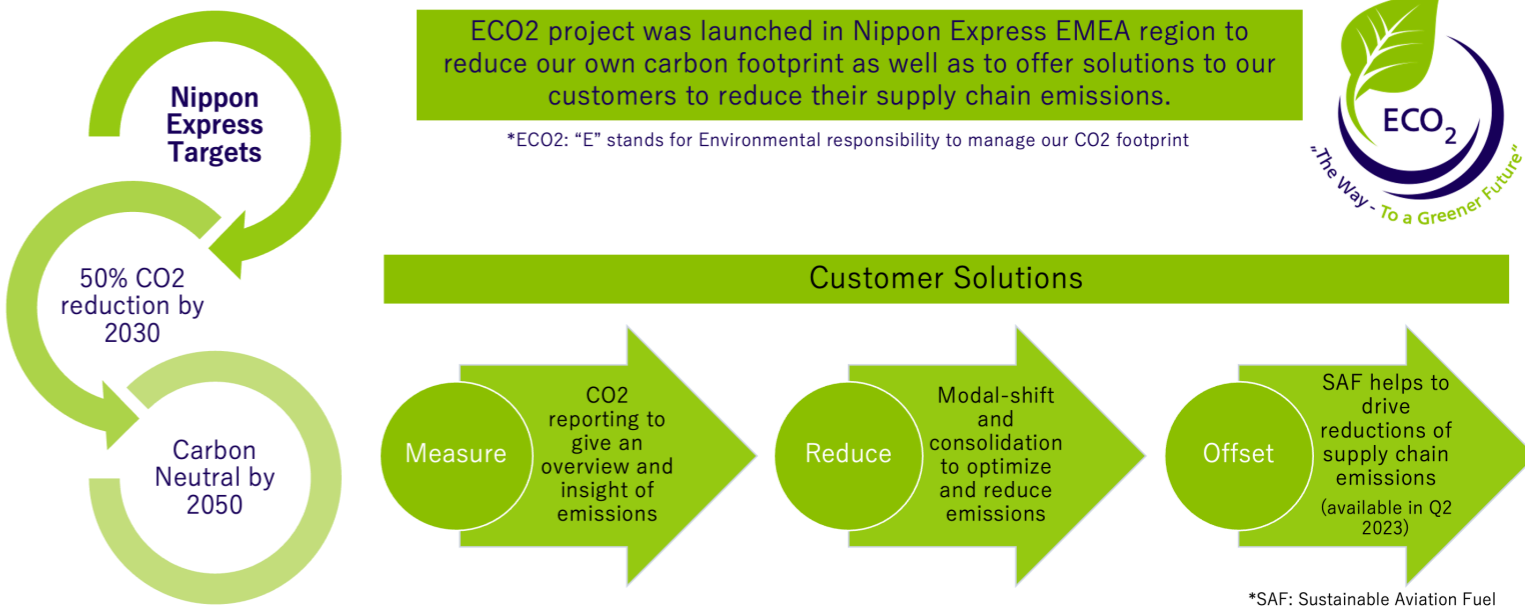
To assist in creating a sustainable society, the Nippon Express Group will carry out its corporate social responsibilities through its various business operations, based on the following principles:

- Pursuit of Safety and Quality
- Sound Company Conduct
- Public Communications, Disclosure of Information and Protection of Information
- Respect for Employees
- Responsibilities to the Earth's Environment
- Contribution to International Society
- Social Contribution Activities
- Respect for Human Rights
- Severance from Antisocial Forces
- Responsibilities of Top Management
- Resolution of Problems by Top Management

More info: <http://www.nipponexpress.com/about/policy/charter.html>

## Nippon Express EMEA "ECO2 Project"

Targets & Solutions to Decarbonize Transport/Logistics



# APPLICATIONS & SYSTEMS

## Information Systems

We offer an optimized information system based on our exhaustive knowledge of distribution. We have created the WMS system and other systems containing a diversified range of achievements and abundant know-how to help us respond to customer logistic requirements, enabling warehousing information, delivery information, shipping information, transportation information and other information to be checked.

### Integrated Website (SHUTTLE)

The SHUTTLE System offers customers access to screens enabling them to reference inventory, cargo receipt, and cargo shipping information from business locations across Japan and the globe via special user IDs and passwords. In addition, it also offers one-stop tracing function regardless of transportation mode.

### Global Warehouse Management System (REWARDS)

REWARDS of Nippon Express supports overseas stock distribution. REWARDS is a global warehouse management system in operation in all regions of the world. This enables us to unify the management of warehouses throughout the world so that we are able to provide detailed and accurate logistics business.

### Worldwide Information System (NEWINS)

Through our worldwide on-line communication and server network we are able to offer our overseas subsidiaries comprehensive support from freight information to accounting systems.

### Transportation Search (Air Trail)

The location of the cargo can be checked on our homepage in real-time. You can trace your freight or parcels by HAWB number, date, Invoice number or Order number. You can also download your data.

### Transportation Search (Track & Trace)

Shippers only have to enter their B/L numbers to track their packages.

### Global Supply Chain Process Management

v-PROCESS is the standard tool of status management for global supply chain covering multiple relevant enterprises.

### NX-Green Calculator

CO<sub>2</sub> emissions calculator. Enter the origin, destination and freight volume for your shipment.

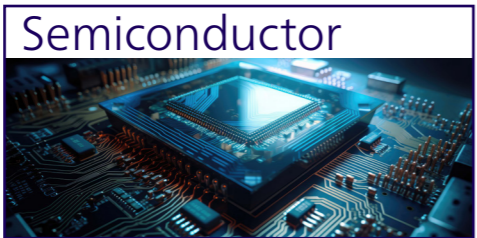


## Key Industries

Our experienced, knowledgeable experts offer optimal solutions to help you meet your business challenges. Nippon Express collaborates with our customers to solve all of their logistical issues in a manner that transcends national borders. The transportation solutions we provide are constantly being updated and optimized to help customers respond to the complex logistical problems they face. Please select your industry below for more details.



High-level logistics support for the ever-growing automotive industry. A key industry in many countries worldwide. We at Nippon Express design high-dimensional global-level supply chain logistics for OEM manufacturers and automotive parts manufacturers involved in high-efficiency production (Tier 1, Tier 2, etc.). We provide full support for sustained growth in the automotive industry with our continued QCD based improvement activities.



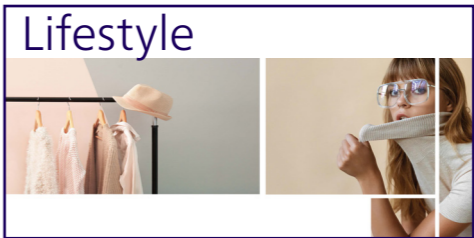
Semiconductor logistics solutions to optimize your supply chain. With high-quality services from delivery of capital equipment and other heavy items to procurement, production and logistics operations near your factory, followed by delivery of finished products to your customers, we're a one-stop global delivery and storage provider. We have the global experience to optimize your semiconductor supply chain.



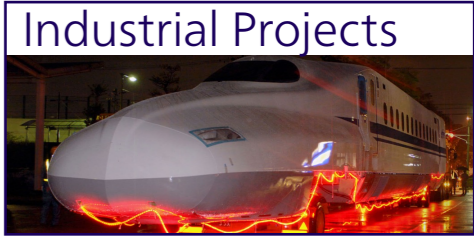
NX Group is expanding into the global market offering end-to-end services. In the global market for end-to-end pharma logistics services, there are strict requirements for temperature control and security during transportation and storage. We are countering these issues by implementing quality control and standardized processes globally thereby allowing us to offer high quality GDP / GMP compliant solutions to the pharmaceutical industry.



A trusted logistics and distribution partner, promoting growth in your business. Our innovative procurement and sales logistics services provide seamless logistics support for all of our customers' business affairs as a distribution infrastructure. We also actively support start-up companies.



Global expansion of logistics services and service quality for fashion/distribution retail industry chiefly cultivated in Japan. By capitalizing on our extremely versatile and highly efficient logistics know-how in Japan, we will expand our supply chain logistics throughout various regions of the world by securing the essential components for fashion/distribution retail industry which are "procurement" > "distribution center" > "delivery" wherever customer plans to operate.



We can handle various special cargoes in all ranges and can transport and install large equipment for various projects worldwide. The vast fleet of special vehicles and construction equipment with high-tech systems provide an integrated service for these projects, handling everything from the transportation of heavyweight equipment and components to on-site assembly, erection, and construction. The division also provides shut-down maintenance services for refineries and petrochemical plants.



Delivering food safety with peace of mind, with a fully developed land, sea and air network. We provide a broad range of services transporting food, which is the source of productive lifestyles, within your country and between other countries. Our global network enables us to handle food in a intermodal style with regard to shipping and delivery. We are also able to provide temperature-controlled management for fresh produce, etc., for items and areas\* that require it.

\*Limited to the nations where this is possible.



We provide global supply chain solutions for the aerospace and aviation industries. Nippon Express provides worldwide services as your comprehensive supply chain partner. Our services optimize your supply chain enabling you to concentrate on production.

## Mobility

### High-level logistics support for the ever-growing automotive industry

A key industry in many countries worldwide. We at Nippon Express design high-dimensional global-level supply chain logistics for OEM manufacturers and automotive parts manufactures involved in high-efficiency production (Tier 1, Tier 2, etc.). We provide full support for sustained growth in the automotive industry with our continued QCD based improvement activities.

### Largest Automotive Component Logistics Solution Provider in Asia.

### Providing Sophisticated Logistics Solutions to the automotive industry worldwide.

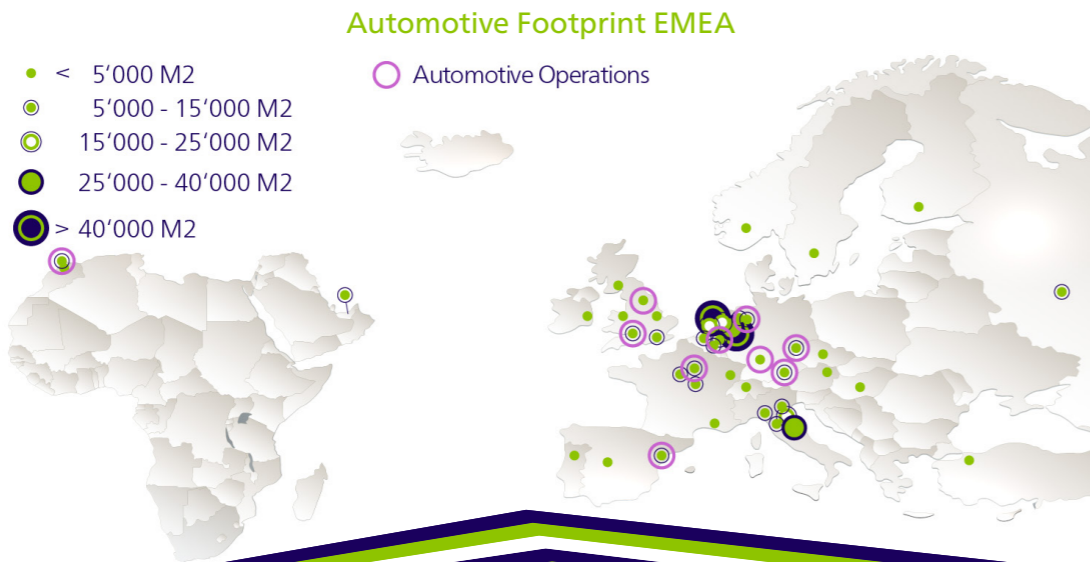
In addition to established areas in Asia, such as Japan, China, India and ASEAN nations, all of which are achieving remarkable levels of growth, we ensure Just-In-Time deliveries through strategically positioned JIT warehouses in North America, Mexico and Europe. We have created an automotive component Logistics network on a global scale in areas where the automotive industry is concentrated.

### Total support optimizing just-in-time logistics and procurement schemes for the entire automotive industry

Accounting for factory production requirements and regional characteristics we provide optimal logistics schemes for production plants. To this end, we match optimal sequenced deliveries with procurement methods such as Milk-run collections and strategically positioned JIT warehouses matched with long-distance transportation.

### Parts Consolidation Centers and seamless Cross boarder logistics supporting the global procurement of mass-produced components.

We act as agents gathering orders from factories worldwide on behalf of OEM manufacturers, and then issue these orders to several hundred suppliers. We create container loading plans that maximize transportation efficiency and reduce costs through our Parts Consolidation Centers. We perform delivery period management to ensure timely delivery to individual factories. In addition, we provide full support for the global procurement of mass-produced parts delivering parts from South Korea and China to Japan using RORO ships, and seamlessly streamlining logistics schemes of parts across Thailand, Malaysia, Europe and China, using international railway services.



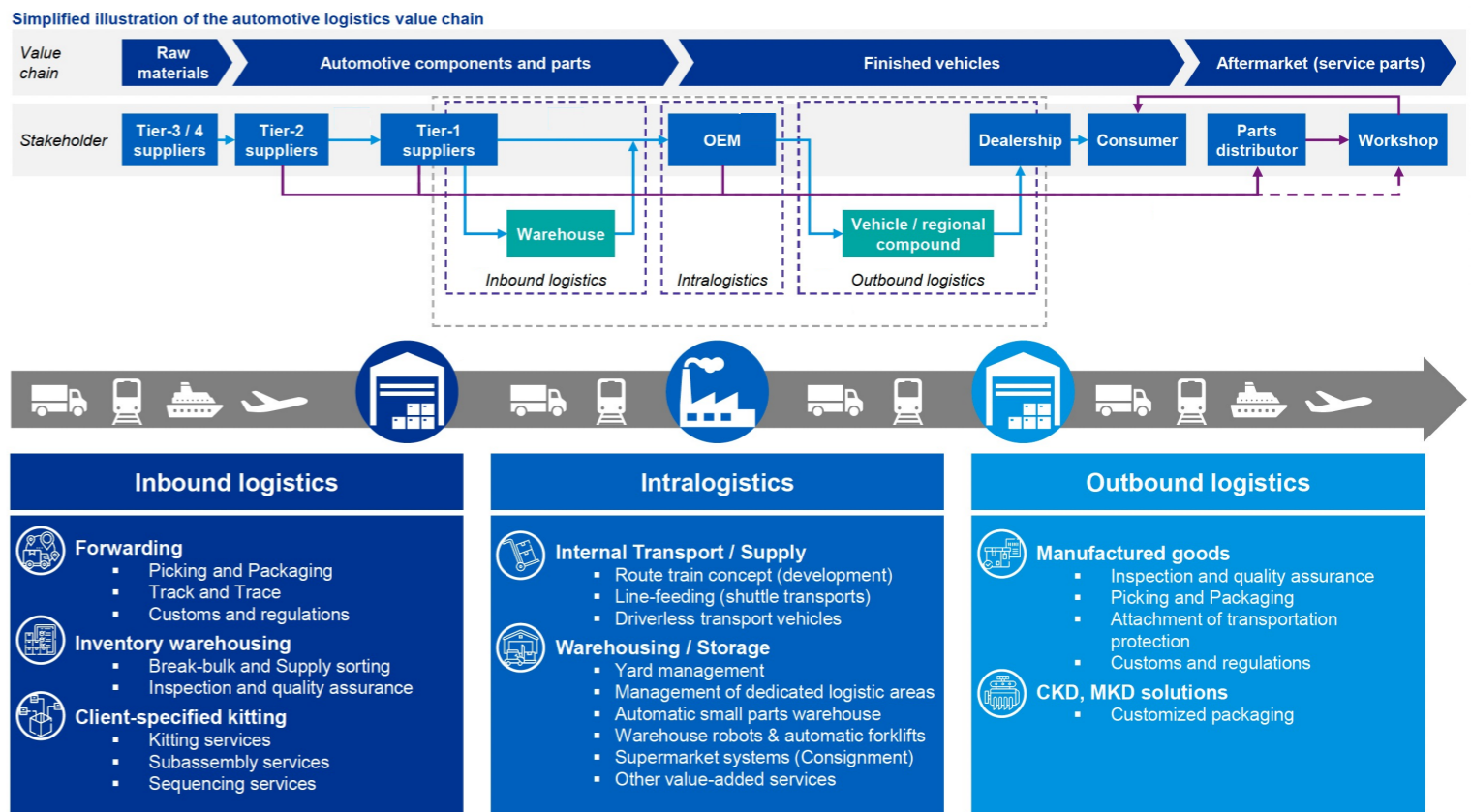
**LLP model that optimizes the automotive industry supply chain.** Based on your needs, we also offer consulting, not only accelerating “Kaizen (Improvement)” of QCD of current logistics schemes, but also suggesting supply chain design including locations, inventory quantity and stock keeping points that optimize logistics schemes.

Our Automotive includes

### Just-in-Time Logistics Schemes

- Procurement logistics solutions(Milk-run, Buyers consolidation)
- Parts Consolidation Center
- KD exports
- Package design, export component packaging, KD packaging
- Cross-border transportation (Japan and South Korea, Japan and China, European railways, rail-transportation)
- Service parts (warehouse, warehouse deliveries, storage, shipping, KPI management)
- LLP, consulting
- Delivery agency services (line optimization and package transformation delivery label adherence, etc.)

### Our Playing Field Within the Mobility Industry



## Semiconductor

Semiconductor logistics solutions to optimize your supply chain  
With high-quality services from delivery of capital equipment and other heavy items to procurement, production and logistics operations near your factory, followed by delivery of finished products to your customers, we're a one-stop global delivery and storage provider. We have the global experience to optimize your semiconductor supply chain.

### Logistical issues faced by the semiconductor industry

#### Transportation quality

- Cargo damage
- Vibration/impact during transportation
- Missdelivery
- Temperature control issues

#### Companies' level of experience

- Delivery date management for capital equipment
- Management of spare parts
- Insufficient expertise

#### Supply chain efficiency

- Inventory management
- Logistics inside the factories
- Building global logistics networks
- Setting up emergency delivery systems

### Nippon Express can solve these issues throughout your semiconductor supply chain.

#### One of the industry's most extensive track records in the delivery of capital equipment.

We have delivered a substantial number of capital equipment over the years. Our extensive track record encompasses deliveries by air, sea and truck on a global scale. We also offer management services for capital equipment and spare parts, using WMS to ensure meticulous LOT management and FIFO. If you have multiple sites, we can provide centralized management.

#### Delivery and storage of semiconductor products, wafers, parts and more

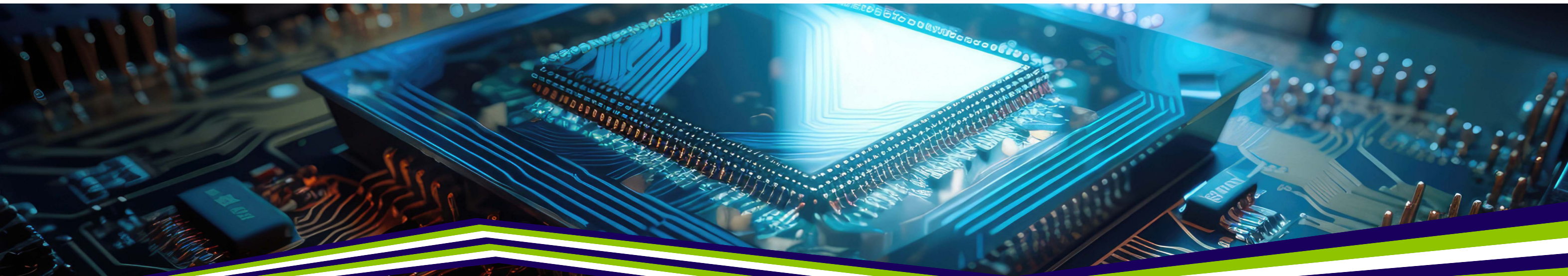
With a global network spanning regions such as Asia, the Americas and Europe , we can transport and store your semiconductor items—finished products, semi-finished products and parts such as wafers—all over the world. We set up warehouses near semiconductor manufacturers' factories and provide end-to-end logistics solutions for their supply chains.

#### High-quality logistics services

We offer so much more than transportation and storage services. We can set up logistics systems tailored to your needs, including high-quality logistics operations within your warehouse (including sorting, inspection and packaging of semiconductor products) and cross-dock operations for customers who procure semiconductor products from overseas and deliver them to multiple sites.

### Key Services

- Delivery of capital equipment
- Delivery of heavy freight
- Delivery and storage of wafers
- Delivery and storage of semiconductor parts
- Delivery and storage of spare parts
- End-to-end management
- Sorting, inspection and packaging
- Cross-dock operations
- Logistics inside the factories



# PHARMACEUTICALS

## Pharmaceuticals

NX Group is expanding into the global market offering end-to-end services

In the global market for end-to-end pharma logistics services, there are strict requirements for temperature control and security during transportation and storage. We are countering these issues by implementing quality control and standardized processes globally thereby allowing us to offer high quality GDP / GMP compliant solutions to the pharmaceutical industry.

## Main Advantages of Our pharmaceutical logistics Services

### Quality

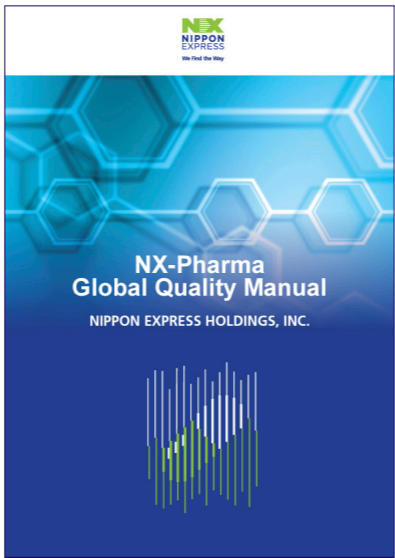
#### Pharma QUALITY is our priority!

We are committed to supporting our customers in ensuring that patients receive the medicines they need by:

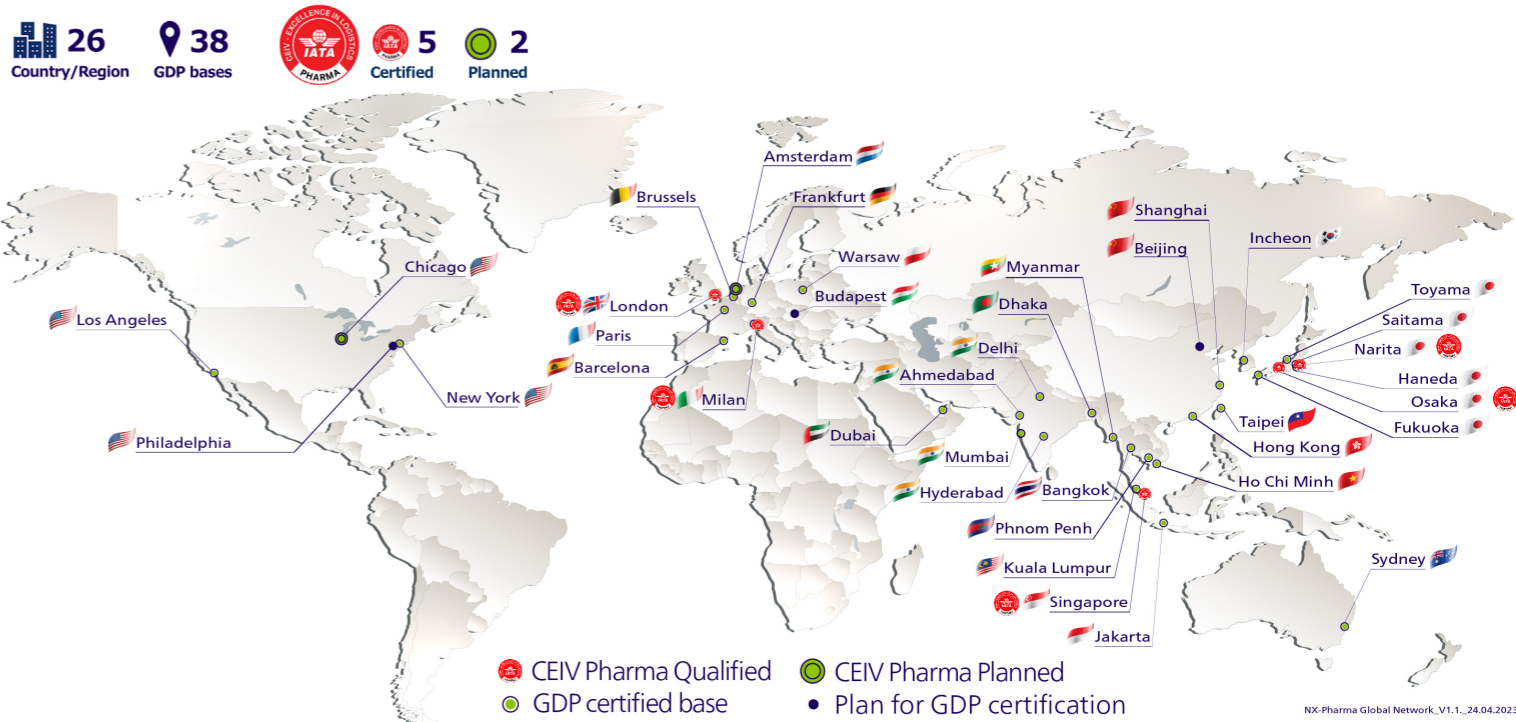
- Maintaining the **quality and integrity** of your products throughout the supply chain
- Focusing on the **Safety of the Patient**
- Providing **safe, secure and reliable** transport and logistic solutions

#### Our Standards:

- We ensure that our standards meet your expectations and needs
- Regulatory compliance
- Global Quality Standards
- Standard QMS in Compliance with GDP requirements
- Robust training and qualification program for the staff handling Pharma
- Effective control and management of sub-contractors to ensure compliance with NX standards and product quality
- Qualification program for our network of GDP subcontractors
- Integrated Quality Risk Management
- Commitment to Continuous Improvement



## CEIV Pharma Qualified & GDP Certified Facilities



## Temperature-controlled transport containers

We provide passive and active containers that accommodate the temperature ranges of 15 to 25 °C, 2 to 8 °C, and freezing. We offer an extensive lineup of containers in order to meet the requirements of customers.

#### Container type



#### Box type



## Latest Investment example of NX Pharma warehousing

- Separated arrival area, storage area, and shipping area
- Truck dock, front room, seat shutter, air shower, and air curtain are installed
- Temperature control (fixed, cold storage)
- Bonded area, special drug area.
- 24-hour monitoring of storage area temperature.
- Seismic isolation structure (excluding some)
- Emergency power generation equipment
- Automated equipment



# ELECTRONICS

## Electric & Telecommunication

A trusted logistics and distribution partner, promoting growth in your business. Our innovative procurement and sales logistics services provide seamless logistics support for all of our customers' business affairs as a distribution infrastructure. We also actively support start-up companies.

## A Wide Range of Services for the Electronics and Telecommunication Industries

### Optimal Logistic Support with the Centralized Management of Complex Supply Chains

Using logistics solutions that include all clerical tasks involved in ordering and procurement, we provide one-stop support for complex sales and distribution supply chains, from procurement, distribution and component purchasing that transcends national borders through to user delivery.

### One-Stop Service for the Transportation of Precision Instruments and Telecommunication Equipment

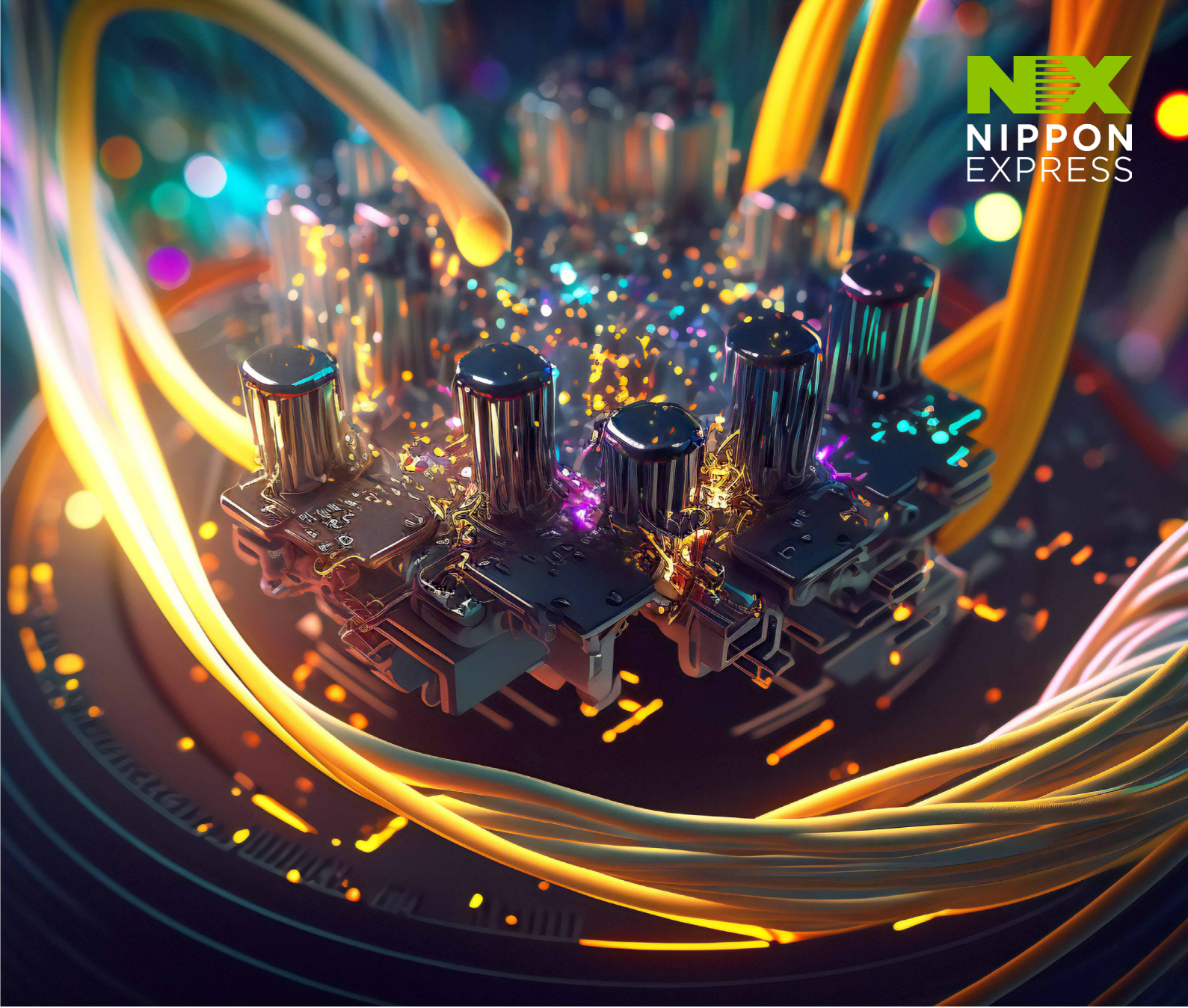
When delivering precision instruments and telecommunication equipment, there are many cases in which the specifications of each item differ and in which certain items are the result of one-off production. This means that the procedures required for issuing requests to suppliers capable of handling the work must frequently be carried out, and delayed deliveries and a lack of communication may lead to unexpected risks. Nippon Express is able to provide integrated services that cover everything from transportation and storage through to packaging, which eradicates the chance of these risks arising.

### Transportation, Including Kitting and Setup, Expanded Throughout the World

In addition to kitting for personal computers and other such equipment, which used to be arranged by customers themselves, we are able to provide value-added services within Japan that cover all aspects of this work, including setup at the place of delivery. We are now expanding these services in Asia and other parts of the world.

### Supporting Customer Requirements with Nationwide and Worldwide Networks

We provide ideal logistics solutions through a combination of our international network straddling 739 branches located in 312 cities, 49 nations, and our ground freight, ocean freight and air freight services to optimize customer supply chains (2,400 branches in Japan).



### Our Electric & Telecommunication Services includes

- The largest scale of service network in the industry- Multi-tenant warehouses and distribution facilities
- Collaborative transportation
- Nationwide LMD (Last Mile Delivery) service network
- Kitting, setup and rework services for PCs, mobile communications equipment and other electric and telecommunication devices
- Reverse logistics service
- IT support provided by our in-house IT department



## Lifestyle

Global expansion of logistics services and service quality for fashion/distribution retail industry chiefly cultivated in Japan. By capitalizing on our extremely versatile and highly efficient logistics know-how in Japan, we will expand our supply chain logistics throughout various regions of the world by securing the essential components for fashion/distribution retail industry which are “procurement” ; “distribution center” ; “delivery” wherever customer plans to operate.

### Logistics based on the consideration of countries’ characteristics and conditions

Costs relating to labor and transportation will greatly vary between different regions and nations. In this regard, not only will Nippon Express introduce high quality of service that is synonymous with our domestic services to the overseas market, we will customize and tailor its services in alignment with logistics conditions and cost structures that is unique to the region of operation. In addition to allowing us to create an optimal logistics plan, we can further expand on our partnership where we can provide proposals for customer’s future growth plans whether that is store expansion and/or opening of new stores as well as for an original launch. We will also actively introduce the usage of IoT, robotics and other leading-edge technologies as needs arise.

### Realization of supply chain logistics by various transport methods

Our logistics services by air, maritime and/or by land with our overseas network for procurement, delivery, trilateral transport connecting various regions of the world will be seamless. By reducing logistics costs with buyers-consolidation and other such initiatives, we are committed to supporting your entire supply chain.

### Advanced operation improvement

To effectively operate a warehouse (storage facility) with a wealth of SKUs, which is the vital feature of the fashion/distribution retail industry, we employ various analysis systems to ensure efficient operations. Furthermore to ensure continual improvements we will, for example, gauge distances walked during picking has been minimized, utilize video analysis, and to bring overall standardization of operation which will result in reduction of logistics costs.

### Analysis of accumulated data

Nippon Express carefully analyzes shipping record data on a regular basis to decipher shipping trends such as number of SKUs per order and items that are been shipped at higher frequencies. We continue to seek for an accurate understanding of situations with our customers so to accommodate customer’s logistical needs thereby contributing to the realization of our customers’ growth plan.

### Horizontal expansion of our logistics services and its quality of service throughout the world

By partnering with Nippon Express, our customers will be able to utilize logistics system that has been developed (whether that is in quality control and/or operation system) for their own strategy for horizontal expansion into other parts of the world. As a global logistics expert, Nippon Express is committed to providing valuable logistics support for your global expansion plans.

### Ironing, Quality Control & Reverse Logistics

#### Targeted Reconditioning Interventions

Labels seams, repairs, hand finishing, rhinestone application, buttonholes and buttons. We can easily manage repairs by hand and by machine, hand linking and darning of embroidery, lace, sequins, repress of rhinestones and studs, sewing of the necessary labels.

#### Ironing and Reconditioning

We have steaming /vacuuming tables for knitwear ironing with or without irons, mannequins, Multiform and Topper for inflated ironing, steaming /vacuuming steamers with armrest, 5-chamber ironing tunnel (2 for vaporization and 3 for drying) and automatic enveloping machines.

#### Stain Removal

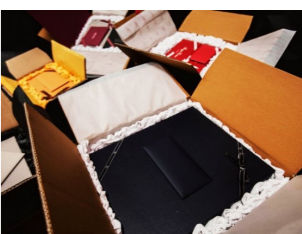
Our stations are equipped for chemical and steam stain removal, allowing us to eliminate a wide range of stains, dirt and glue from any type of fabric.

#### Samples Management

We regularly manage the repairing of the proto-samples, the Quality Control up to the confirmation of the repaired sample. After receiving the sample products in logistics, we provide for the reconditioning, packaging and shipping to the different locations worldwide.

The competence of qualified operators and the development of customized Process Guidelines for each client, enable us to achieve a high-quality standard, maintaining customer’s returns feedback practically equal to zero. We are able to meet the requirements of flexibility, speed and reliability both in Italy and abroad. The finished product undergoes continuous visual quality checks, throughout its process up the ironing phase and the Quality Control (suitability control to the customer’s technical sheets) before the enveloping and barcoding phase. If necessary, upon specific request of each customer, we can perform a 100% Quality Control for each item.

With Nippon Express, garments don’t need to leave the warehouse to be ironed and repaired.



# INDUSTRIAL PROJECTS

## Project cargo freight forwarding

**Project cargo freight forwarding activity refers to the items that are oversized and heavy lift. It means to manage the challenges of transporting sizable goods of immense weight from remote locations in the world and securely delivering them to the receiving sites.**

The Industrial Projects team has more than 20 years of field training, with proven track of excellence in managing multi modal operations by land, sea, air, rail and employing different means of transports (break bulk vessels, RO-RO vessels, dedicated aircraft and barge) while always adhering to contractual obligations.



## Project cargo freight forwarding

- European local heavy haulage by truck; Port handling assistance/ Survey
- Direct chartering of barge/break bulk vessels/charter aircraft and ro/ro shipments
- Freight forwarding services (land/air/sea/rail) for project cargo industry
- Inland deliveries for out-of-gauge cargo/ job site handling
- Preliminary Transport studies related to a specific project
- Local surveys with experienced technician
- Budgeting for future projects (bid to bid offer, preliminary studies)

## Supporting Large-Scale Projects in All Areas of the World

We transport heavy construction machinery and support large projects around the world on a regular basis by using all modes of transportation, and oversee entire projects handling, from the transportation of diverse goods and equipment to the installation and construction phases.

## Optimal Logistics Solutions

Today, businesses are required to 'beat the clock' on an almost constant basis. Our Industrial Projects division is here to provide you with an optimized logistic solution to support your specific business requirements.

## Project cargo freight forwarding

- Transportation, installation, and maintenance of all types of equipment in power stations and transformer substations
- Plant transportation, installation, construction and maintenance
- Transportation, installation, and maintenance of wind power generation equipment
- Bulk delivery and installation of equipment at high-tech manufacturing plants
- Bridge construction and dismantling
- Transportation of Shinkansen (bullet trains)
- All other transportation and installation work



## Our European Industrial Projects Division - Industrial Projects definition

Heavy lift, over-dimensional or out-of-gauge cargo from any origin in the world to remote sites, requiring multi-modal operating skills, specialized equipment, and method of transportation by sea, air, barge, rail or land project cargo and a time-specific contract.

## The reference market segment of the Industrial Projects Division

Infrastructure, Rail & Rolling Stock, Power Energy, Oil & Gas Onshore/Offshore, Petrochemical & Refinery, Military / UN

# WHY NIPPON EXPRESS



We build tailor-made solutions from our standardized Logistic Supply Chain Solutions menu

Implement your business strategy on a global scale

- Global presence with local expertise
- Control and visibility of total supply chain
- Order and supplier management
- Full suite of services on all continents

Keep our promises to your customers

- Stable and replicable operational processes
- Excellence in culture
- Robust technology and infrastructure
- Easy to do business with

Reduce your total supply chain costs

- Systematic elimination of waste (LEAN)
- Application of best practices
- Optimization of supply chains to reduce costs
- Lower inventories through better control and visibility

Support your commitment to sustainable development

- Reduction of carbon footprint
- Compliance to regulations throughout the supply chain
- Safe and secure operations



NIPPON EXPRESS CO., LTD. ("the Company") respects the principles of the "Fair Disclosure Rules" set forth in the Financial Instruments and Exchange Act, and through timely and appropriate disclosure of fair and highly transparent information, and through dialogues with stakeholders including shareholders and investors, the Company strives to raise the quality of corporate management and enhance corporate value in a sustainable manner, while enriching communication, and maintaining and improving relationships of mutual trust.  
Read more >> <https://www.nipponexpress.com/ir/disclosure/>



Marketing

If you require further information,  
please feel free to reach out to us.  
We are pleased to support you.

#### EUROPE

Nippon Express Europe GmbH  
Am Wehrhahn 33  
D-40211 Duesseldorf

" You have previously been included in our professional corporate contacts. If you no longer wish to receive marketing emails from us please send an email to: [NEEU-Info@nipponexpress.com](mailto:NEEU-Info@nipponexpress.com)"

[WWW.NIPPONEXPRESS.COM](http://WWW.NIPPONEXPRESS.COM)

